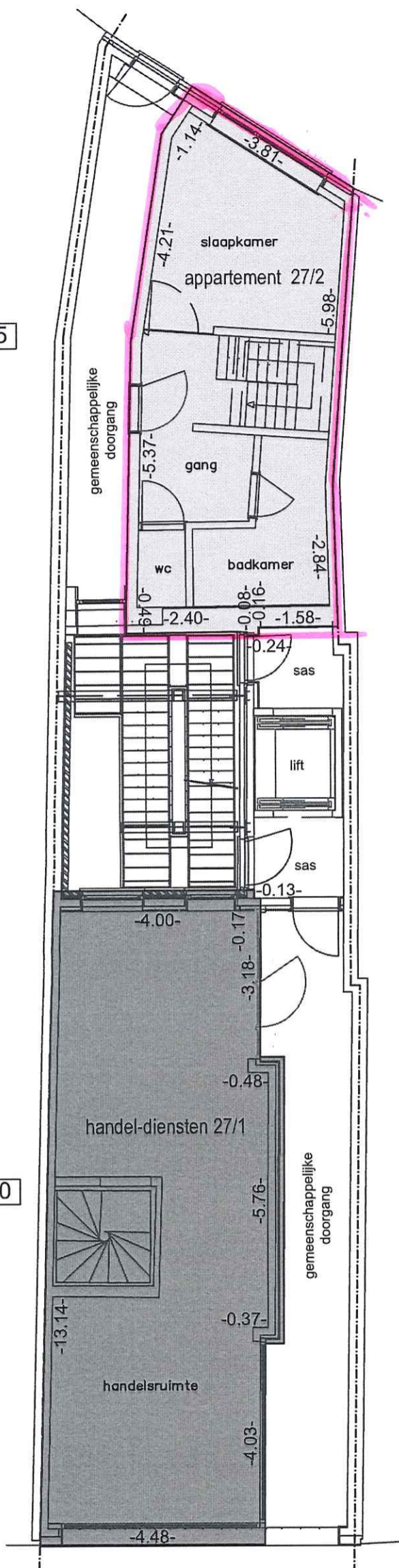


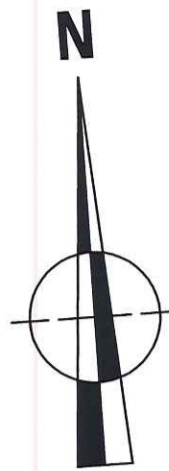
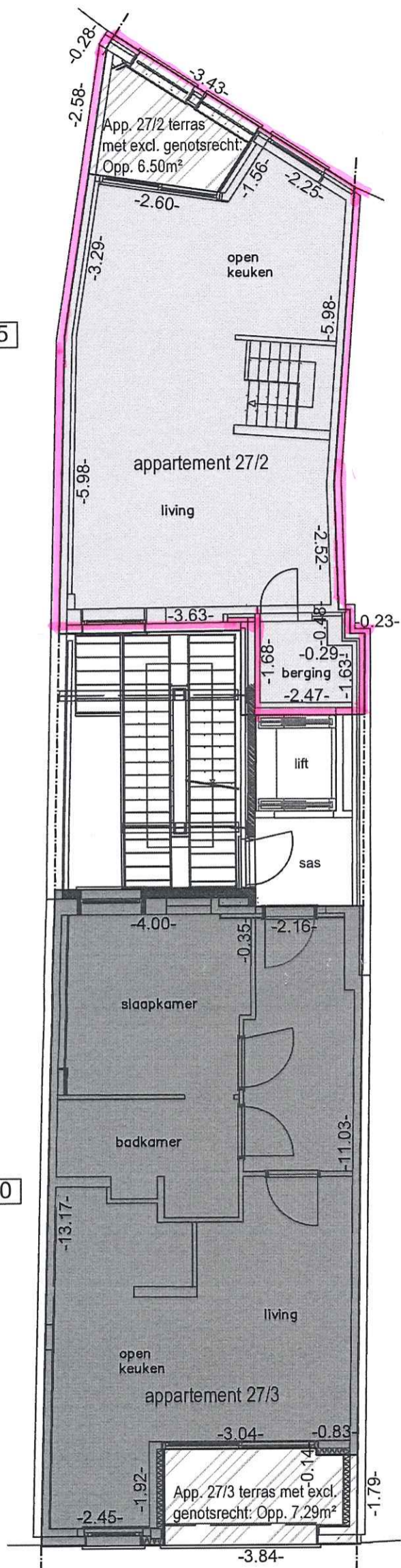
niv. 0.5



niv. 0.0

-  Totale opp. appartement 27/2 (incl. muren): 96.16m²
-  Totale opp. handel-dienst 27/1 (incl. muren): 59.00m²

niv. 1.5

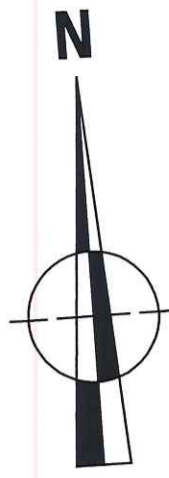
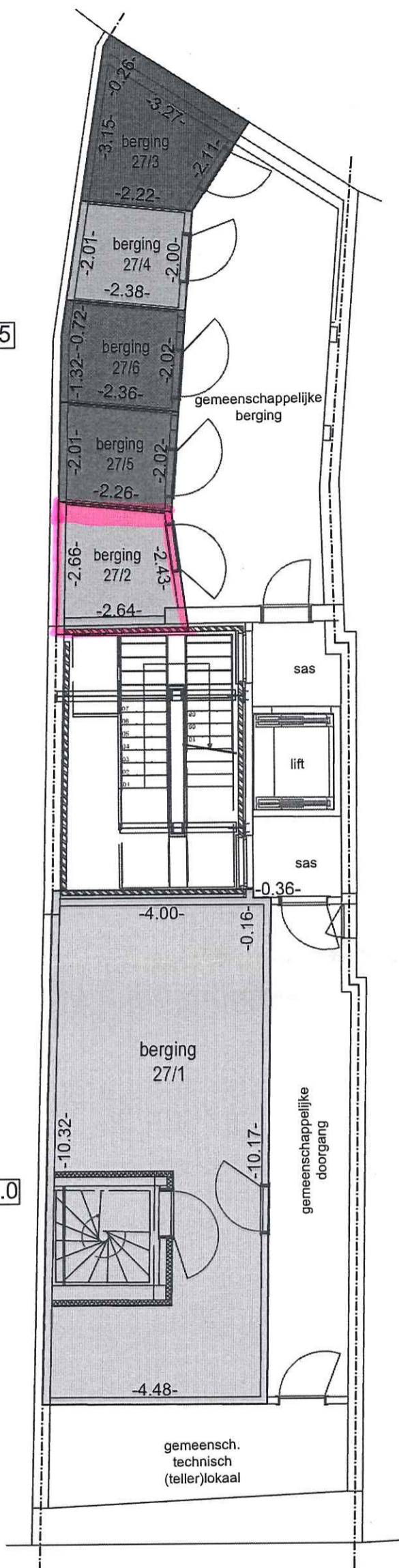







niv. 1.0

-  Totale opp. appartement 27/2 (incl. muren): 96.16m²
-  Totale opp. appartement 27/3 (incl. muren): 73.91m²

niv. -0.5

niv. -1.0



-  Totale opp. bergin 27/1 (incl. muren): 45.58m²
-  Totale opp. berging 27/2 (incl. muren): 6.19m²
-  Totale opp. berging 27/3 (incl. muren): 7.39m²
-  Totale opp. berging 27/4 (incl. muren): 4.61m²
-  Totale opp. berging 27/5 (incl. muren): 4.65m²
-  Totale opp. berging 27/6 (incl. muren): 4.87m²

BASISAKTE