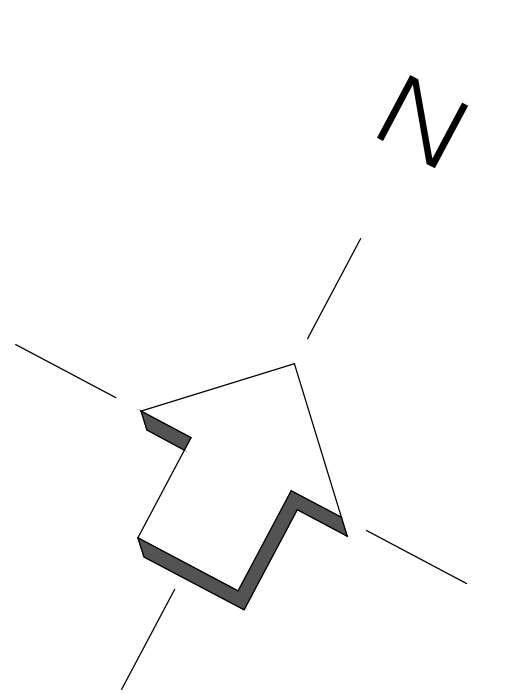
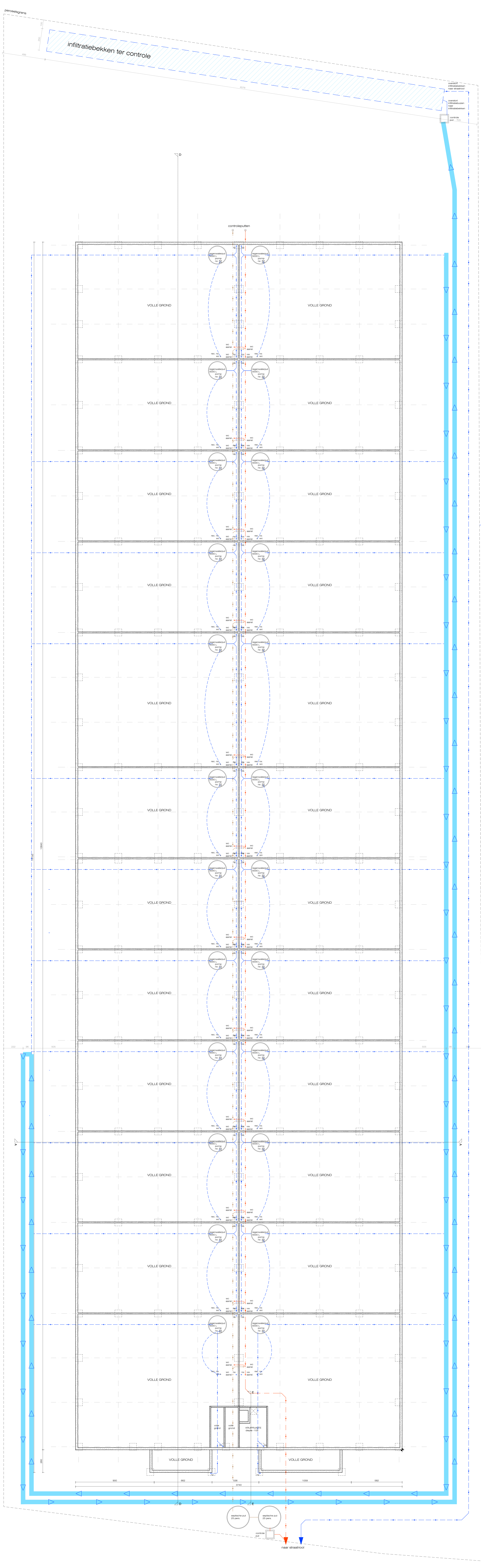
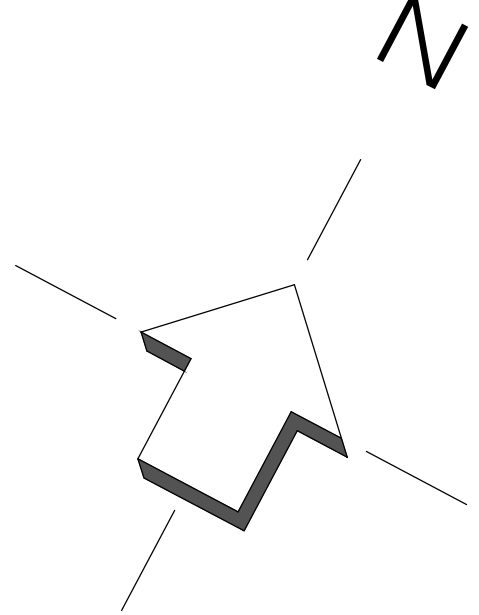
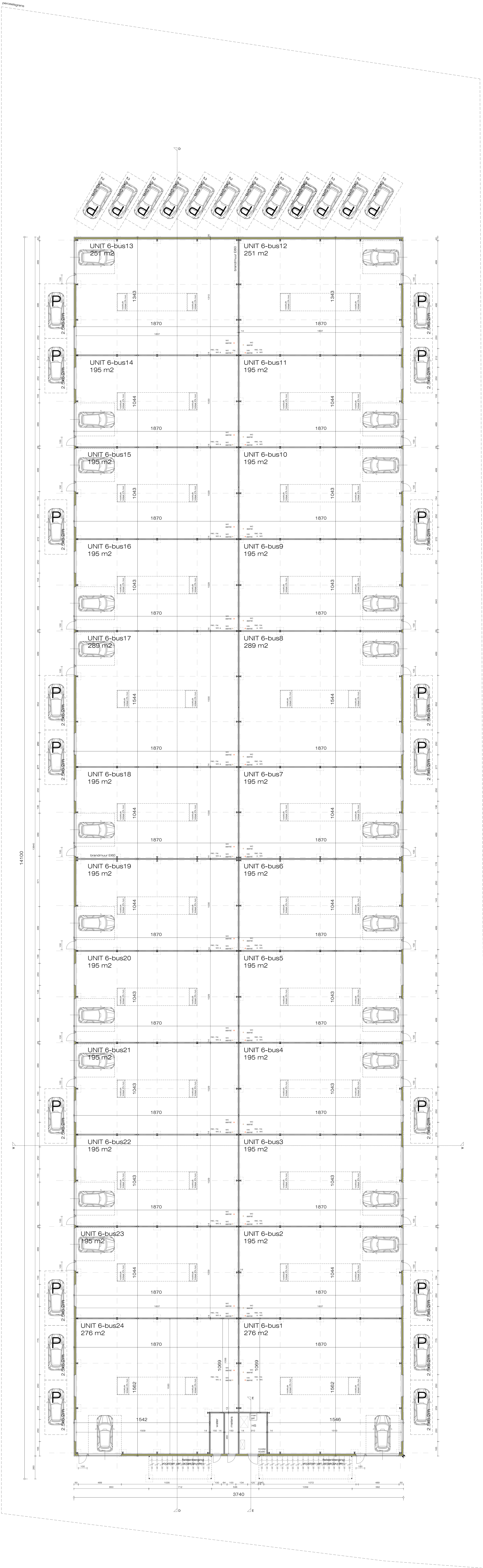
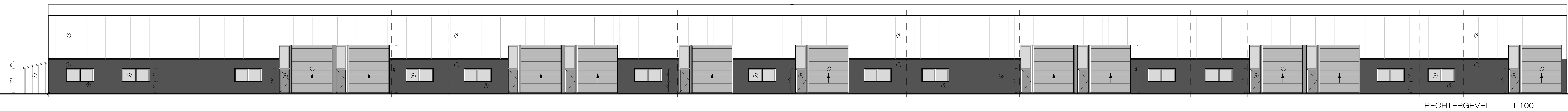


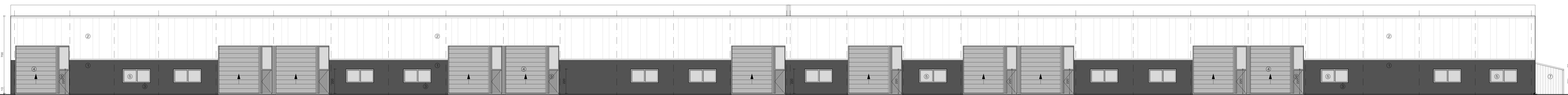
tot: 5222.20 m² infiltratieopp: 151.29 m ² (5222.20 - (24 x 60)) / 25 infiltratievol: 94595 L (5222.20 - (24 x 60)) x 25	
94595 / 196 = 482.42 m 151.298 / 0.785 = 192.72 m	
infiltratiebus sta. 500mm - infiltratievol: 196 L/m - infiltratieopp: 0.785 m ² /m	
Deelstatie regenwaterputten: - totaal volume: 120000 L (24 x 5000 L)	
Geplaatste infiltratievoorziening: 500mm inf. bus Ø500mm - infiltratievolume: 98000 L - infiltratieoppervlakte: 392.5 m ²	
Aan te leggen verharding: nieuwe verharding in waterslopende klinkers: opp. 1877 m ² nieuwe verharding in grasstalen: opp. 1174 m ²	
Infiltratiecapaciteit infiltratiebekken ter controle: - infiltratievolume: 24231.6 L - infiltratieoppervlakte: 98.52 m ²	
De infiltratievoorziening van het gebouw wordt niet meegenomen in de berekening.	



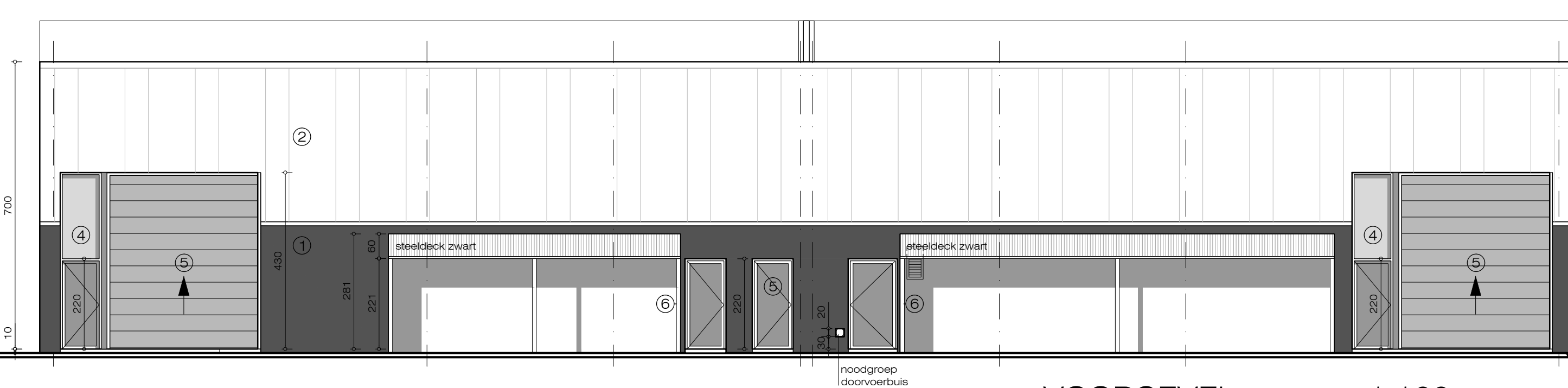




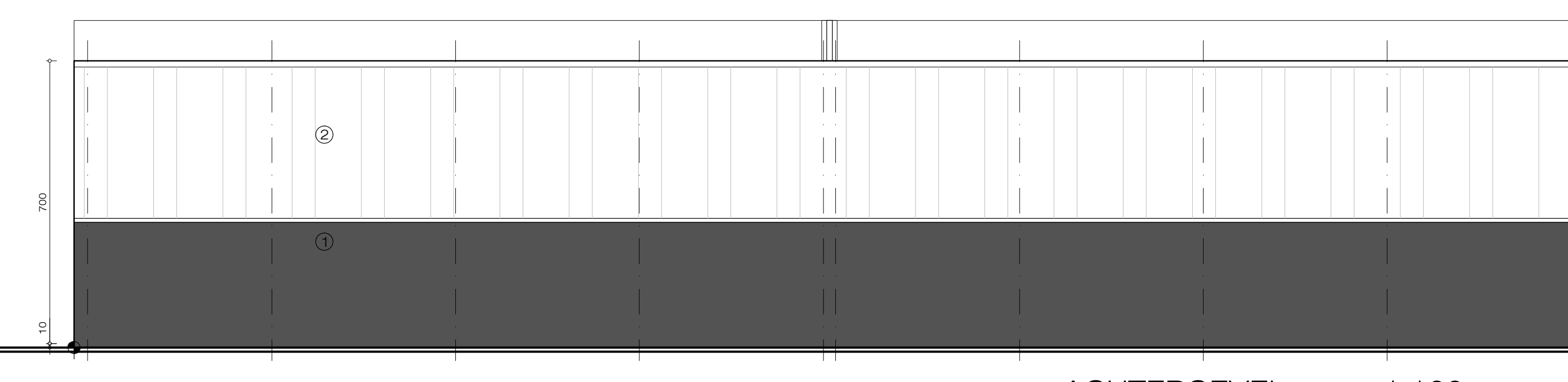
RECHTERGEVEL 1:100



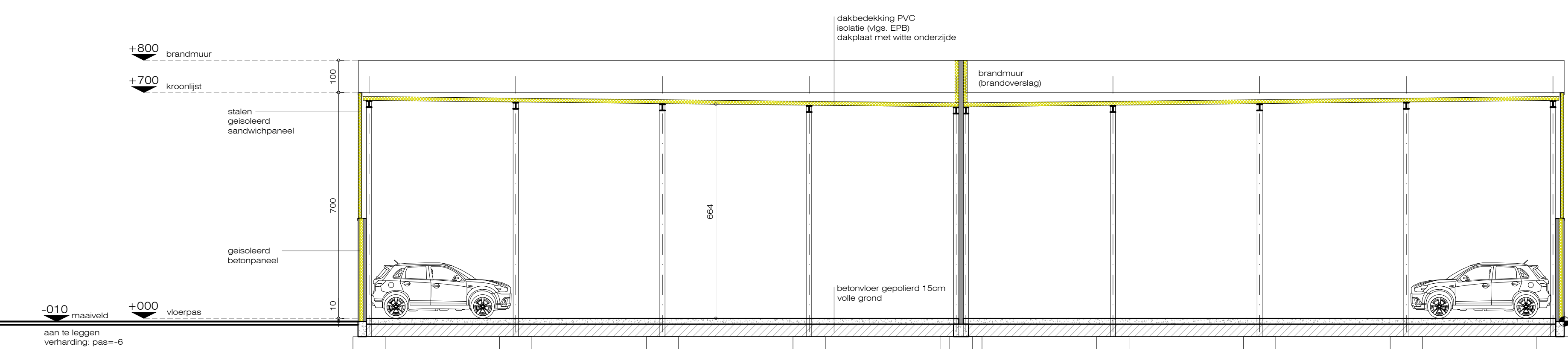
LINKERGEVEL 1:100



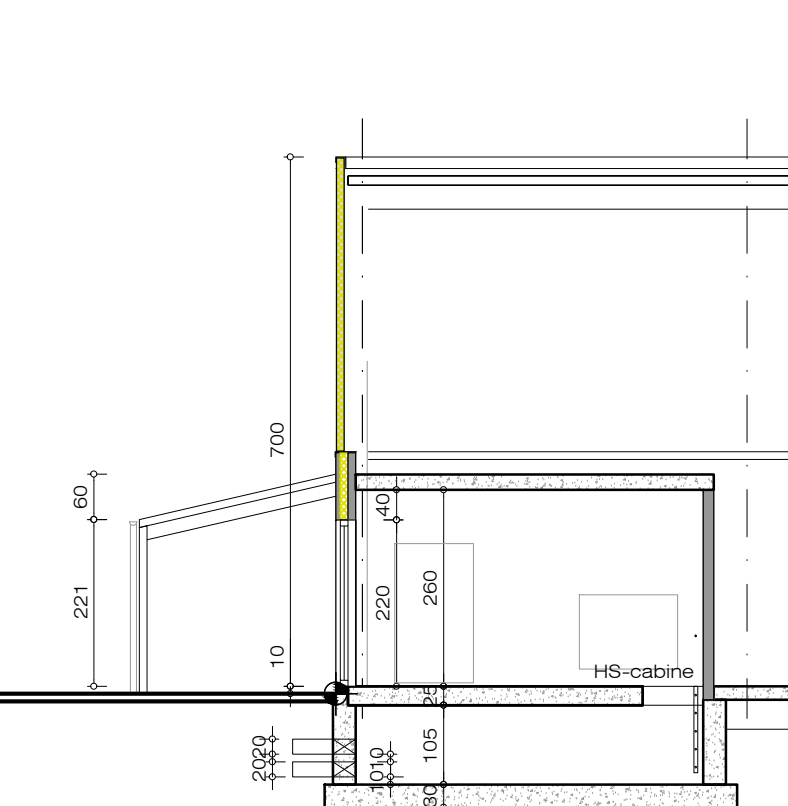
VOORGEVEL 1:100



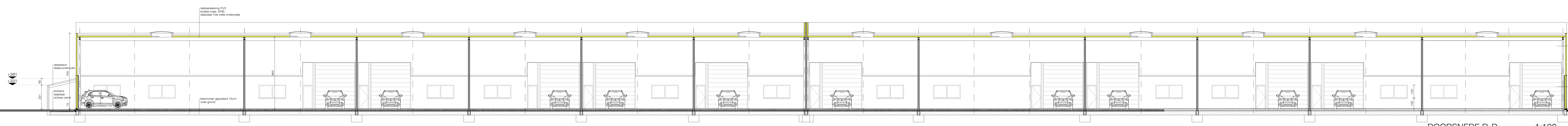
ACHTERGEVEL 1:100



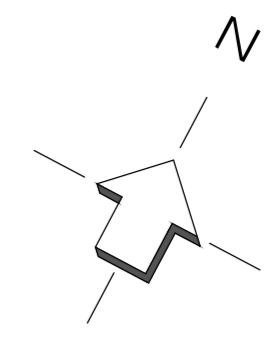
DOORSNEDE A-A 1:100



DOORSNEDE E-E 1:100



DOORSNEDE D-D 1:100



676A
grasland

673M
tuin

673N
tuin

Kadastraal:
Gemeente Tongeren
8ste afdeling
Sectie 3
Perceel 677E
Opp. ca. 9284 m²

Regenwater infiltreert naast
de verharding op eigen terrein.

