





LEGENDE

	rand verharding
	rand boordsteen /greppel
	kruin open gracht
	afsluiting op metalen stijlen
	rand verkaveling
	levende haag
	gebouw
	kopmuur / hekstijl in metselwerk
	hydrant
	elektriciteitspaal + verlichting
	rioolrooster
	boom.
	foto-opname punt

Algemeen directeur

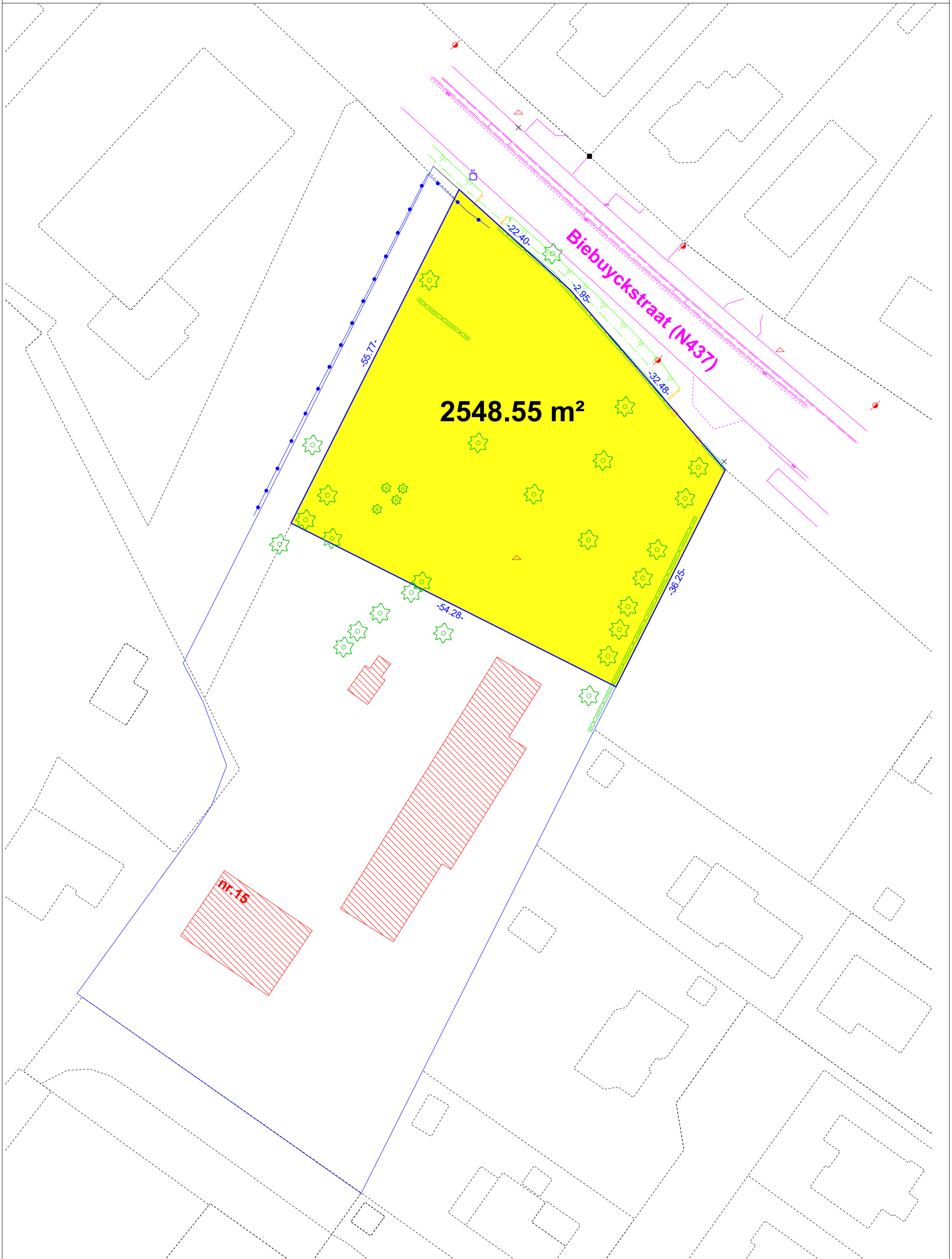
Stephanie de Vlieger

Burgemeester

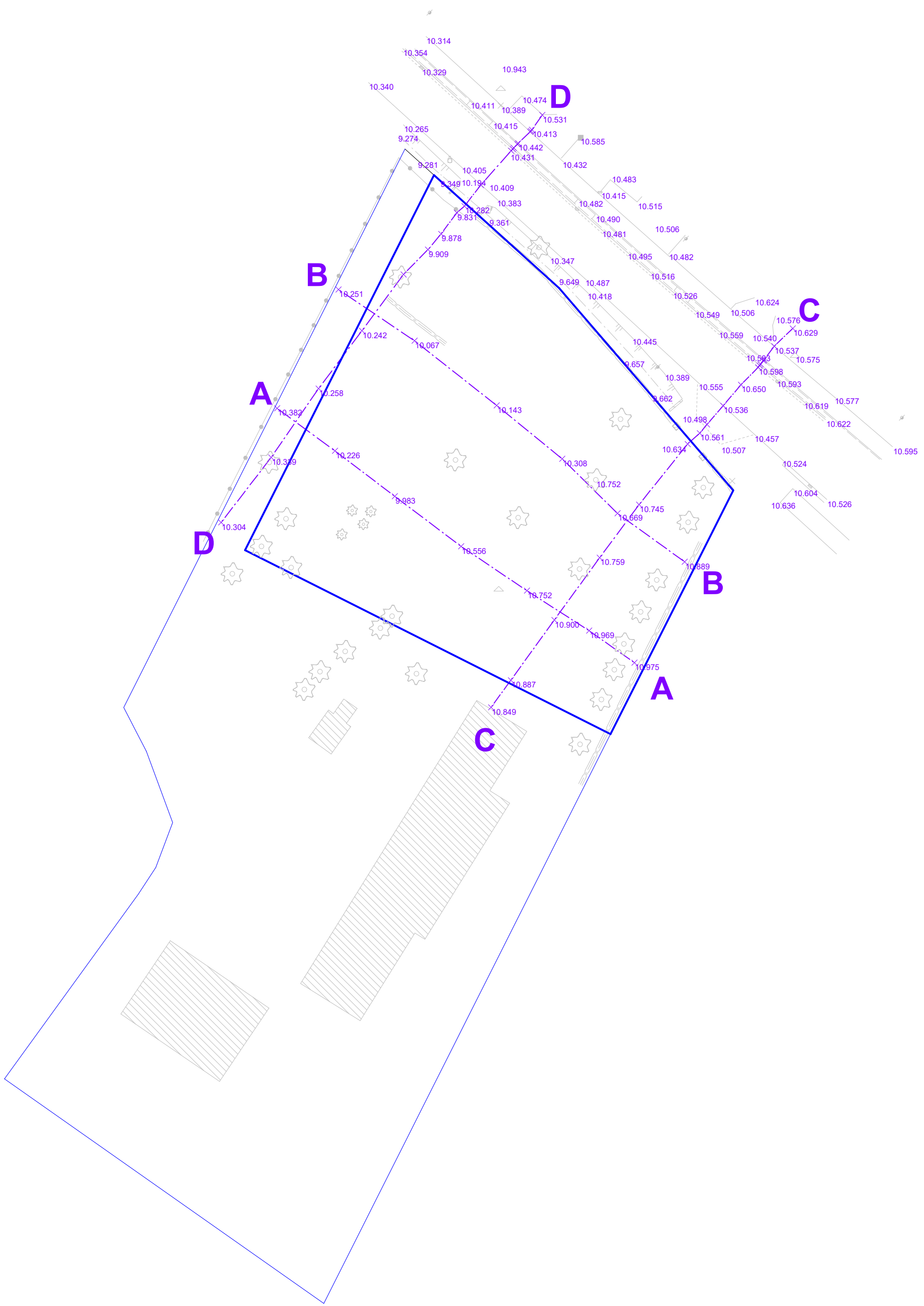
Jan Vermeulen

Deinze 12de Afdeling Nevele - Sie F 328 F

BESTAANDE TOESTAND



Deinze 12de Afdeling Nevele - Sie F 328 F



PROFIELEN

