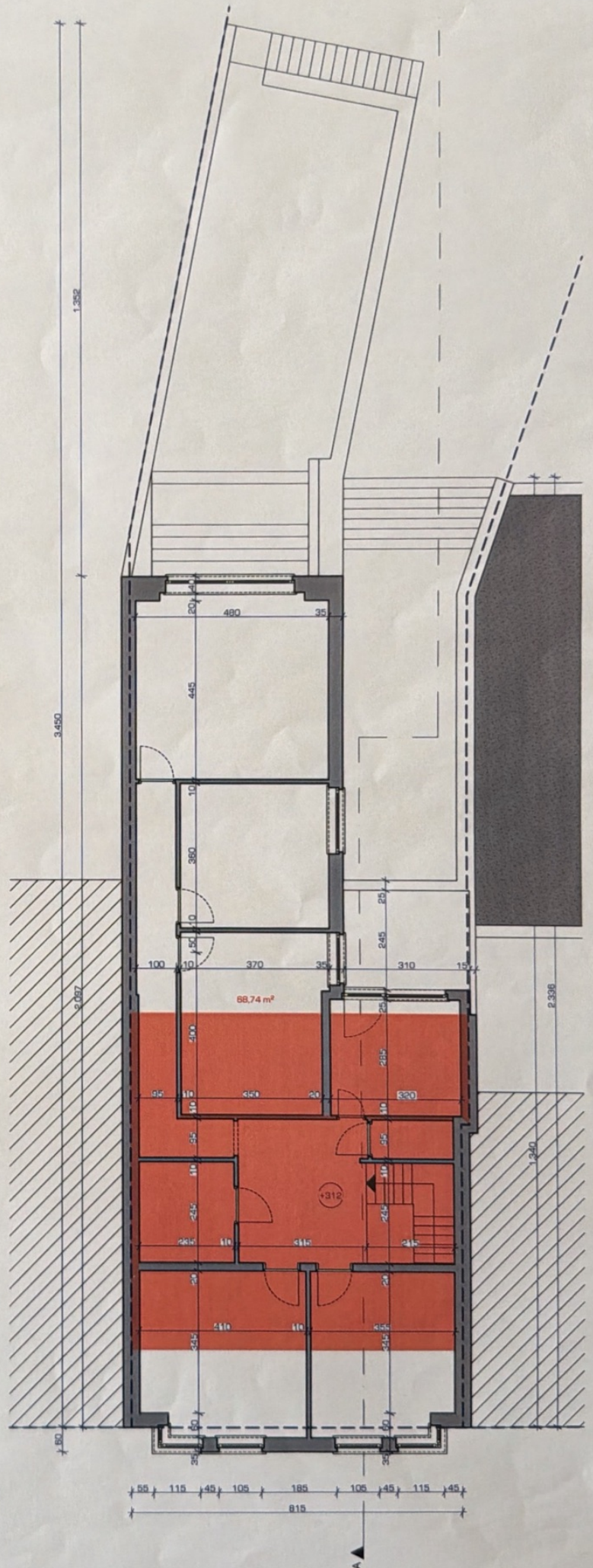


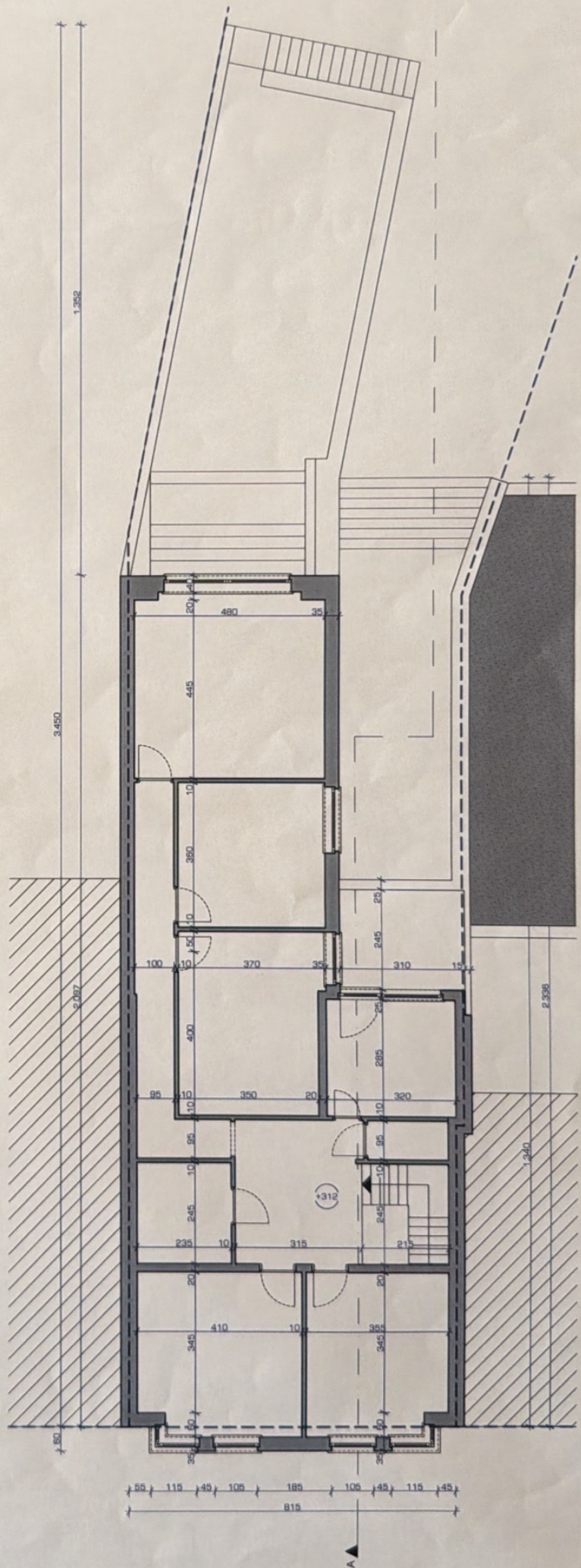
**BEGANE GROND +0**  
1:100

BRUTO-OPP.: + 150,00 m<sup>2</sup>  
NETTO-OPP.: + 125,00 m<sup>2</sup>



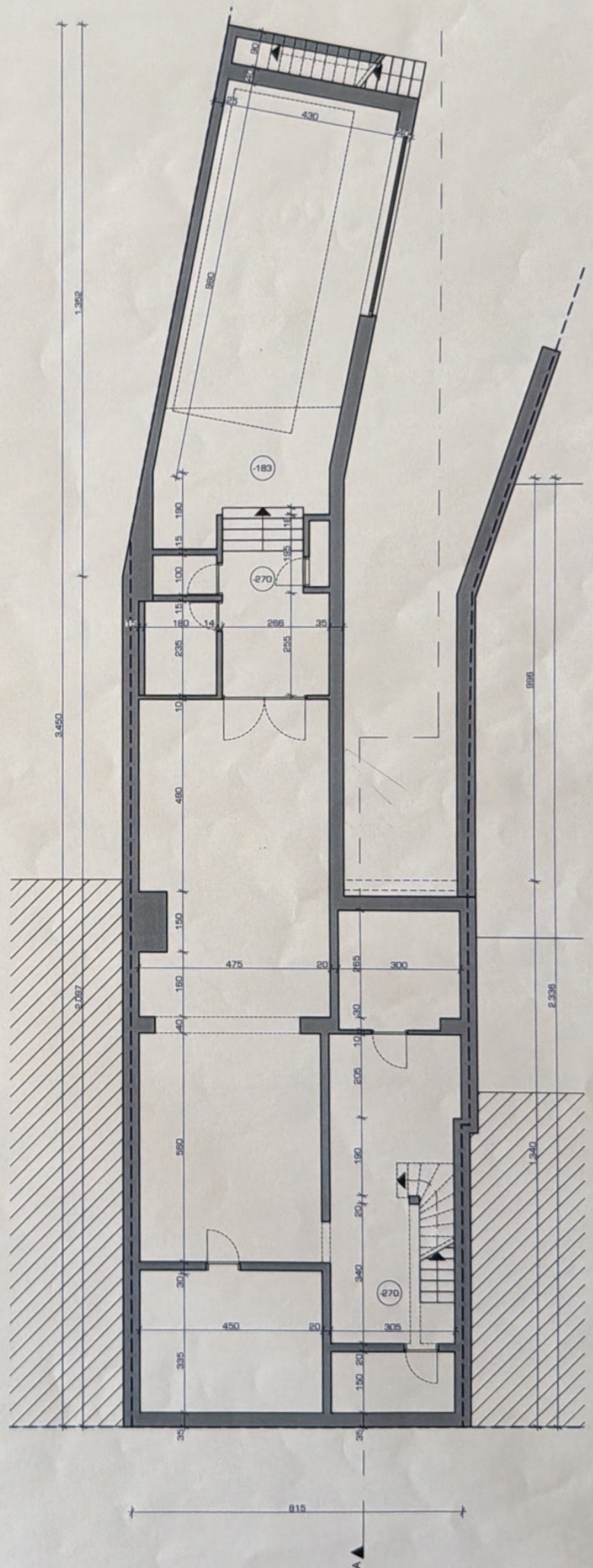
**VERDIEPING +1**  
1:100

BRUTO-OPP.: + 146,50 m<sup>2</sup>  
NETTO-OPP.: + 131,50 m<sup>2</sup>



**VERDIEPING +1**  
1:100

BRUTO-OPP.: + 146,50 m<sup>2</sup>  
NETTO-OPP.: + 131,50 m<sup>2</sup>



**KELDER -1**  
1:100

BRUTO-OPP.:  $\pm 215,00 \text{ m}^2$   
NETTO-OPP.:  $\pm 188,00 \text{ m}^2$



807S

807R



PERCEEL  
oppervlakte:  $\pm$  791,00 m<sup>2</sup>

plat dak  
opp.:  $\pm$  78,30 m<sup>2</sup>

terras  
opp.:  $\pm$  66,40 m<sup>2</sup>

800AS

803D2

803C2

803Z

verharding  
opp.:  $\pm$  29,30 m<sup>2</sup>

OMS

terras  
opp.:  $\pm$  8,25 m<sup>2</sup>

21

23

plat dak  
opp.:  $\pm$  146,50 m<sup>2</sup>

13

**INPLANTINGSPLAN  
BESTAAND**  
1:200

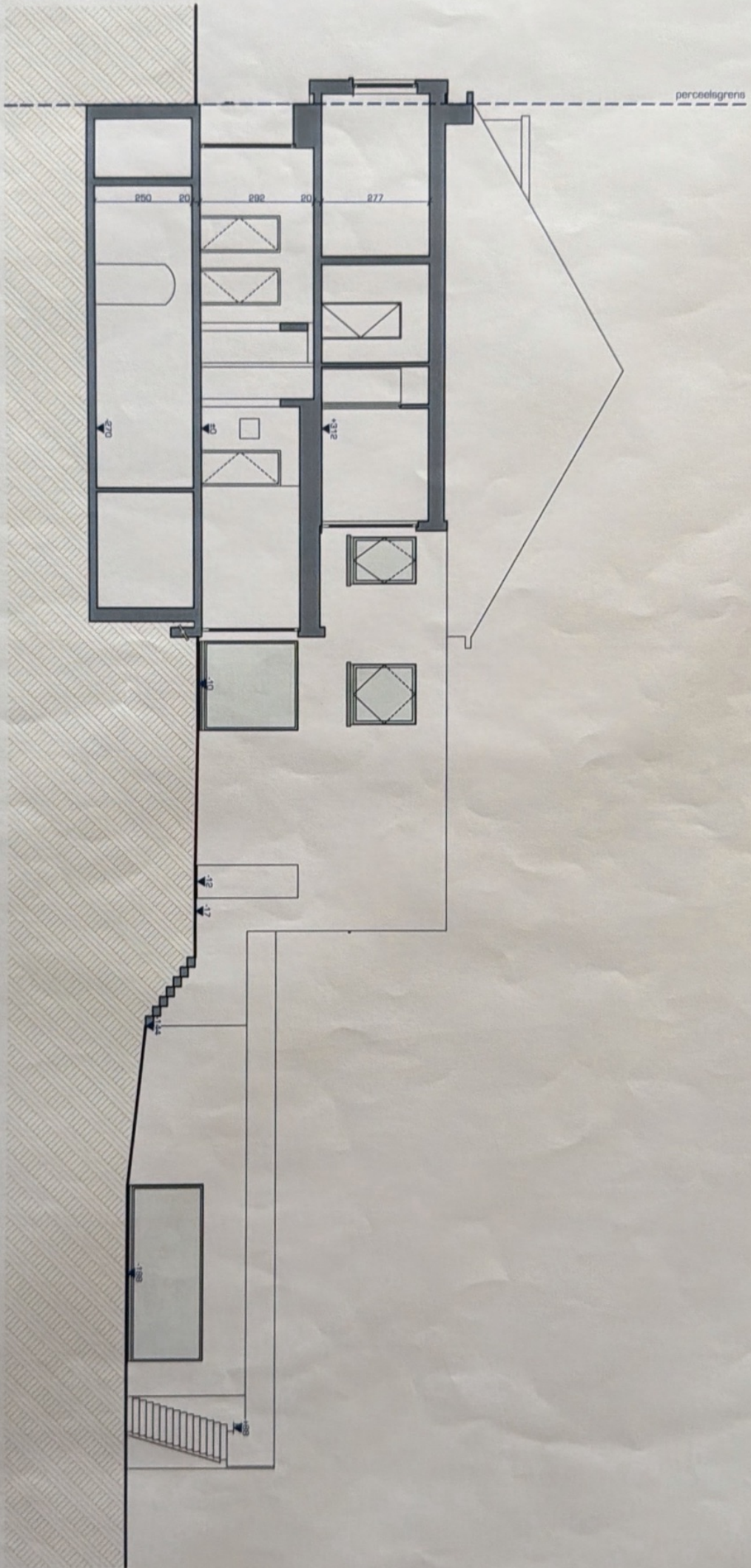
Tongersesteenweg

GROSEMANS HEYLEN  
ARCHITECTEN

CAPUCIENNESSTRAAT 12 - B-3800 SINT-TRUIDEN - TEL 0032 (0)11/64 14 01 - FAX 0032 (0)11/70 72 35  
KAPUCIENWEG GROSEMANS HEYLEN BE - LUCIENWEG GROSEMANS HEYLEN BE - WWW.GROSEMANS-HEYLEN.BE

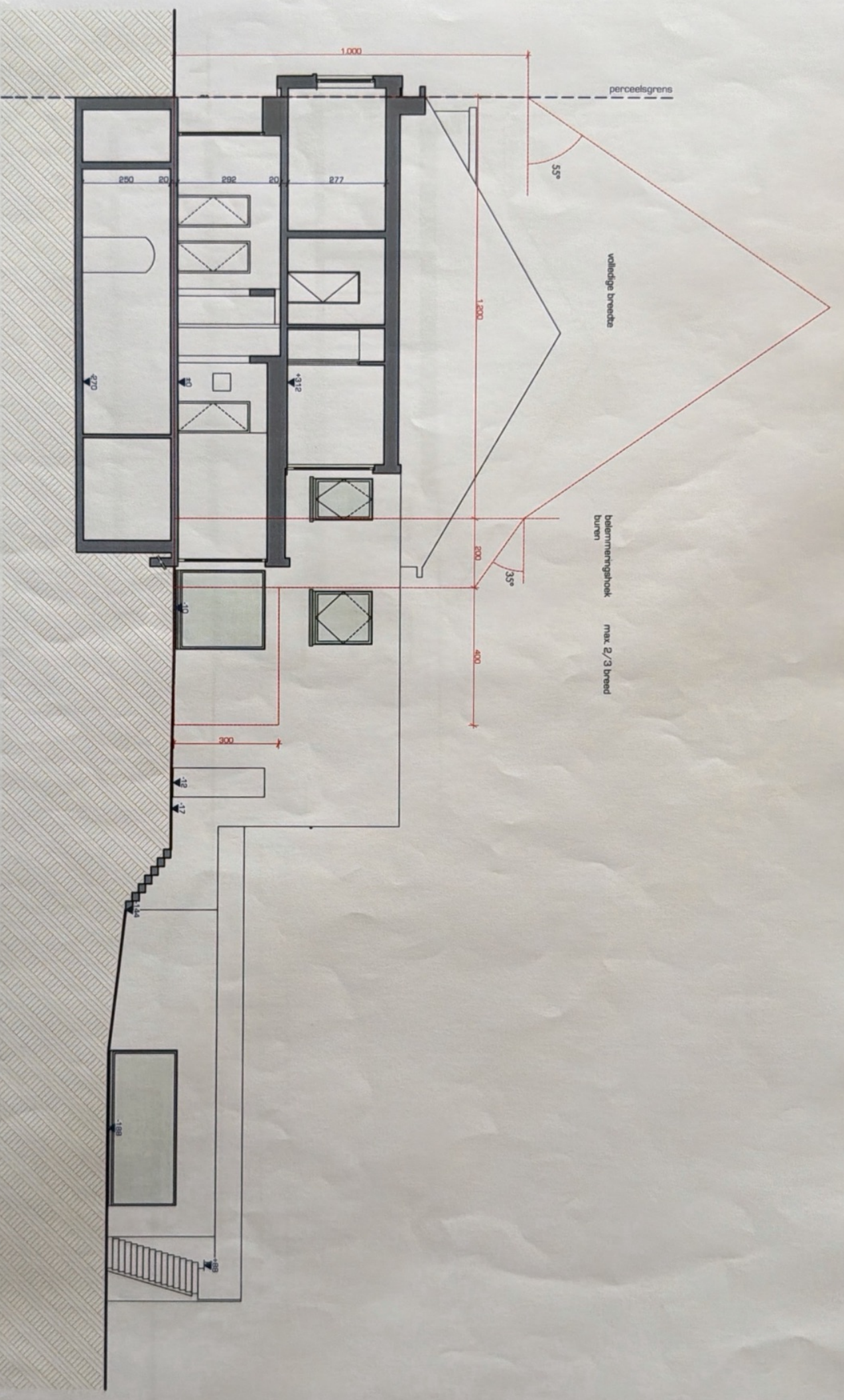
13/09/17  
17XX FESTAETS

SNEDE AA  
1:100



GROEMANJ HEYLEN  
A B C H I J E C I E N  
CAMPELDEBONDINGMAAT 'V' B. SANDI SWP THALDEN 111, 2002 ZWOLLE JA 01 FAX 0432 5291 50 22 24  
FAKTOERENPROEVENING HEYLEN BE LUCHTENBOESMAANS HEYLEN BE WWW.GROEMANJHEYLEN BE

**SNEDE AA**  
1:100

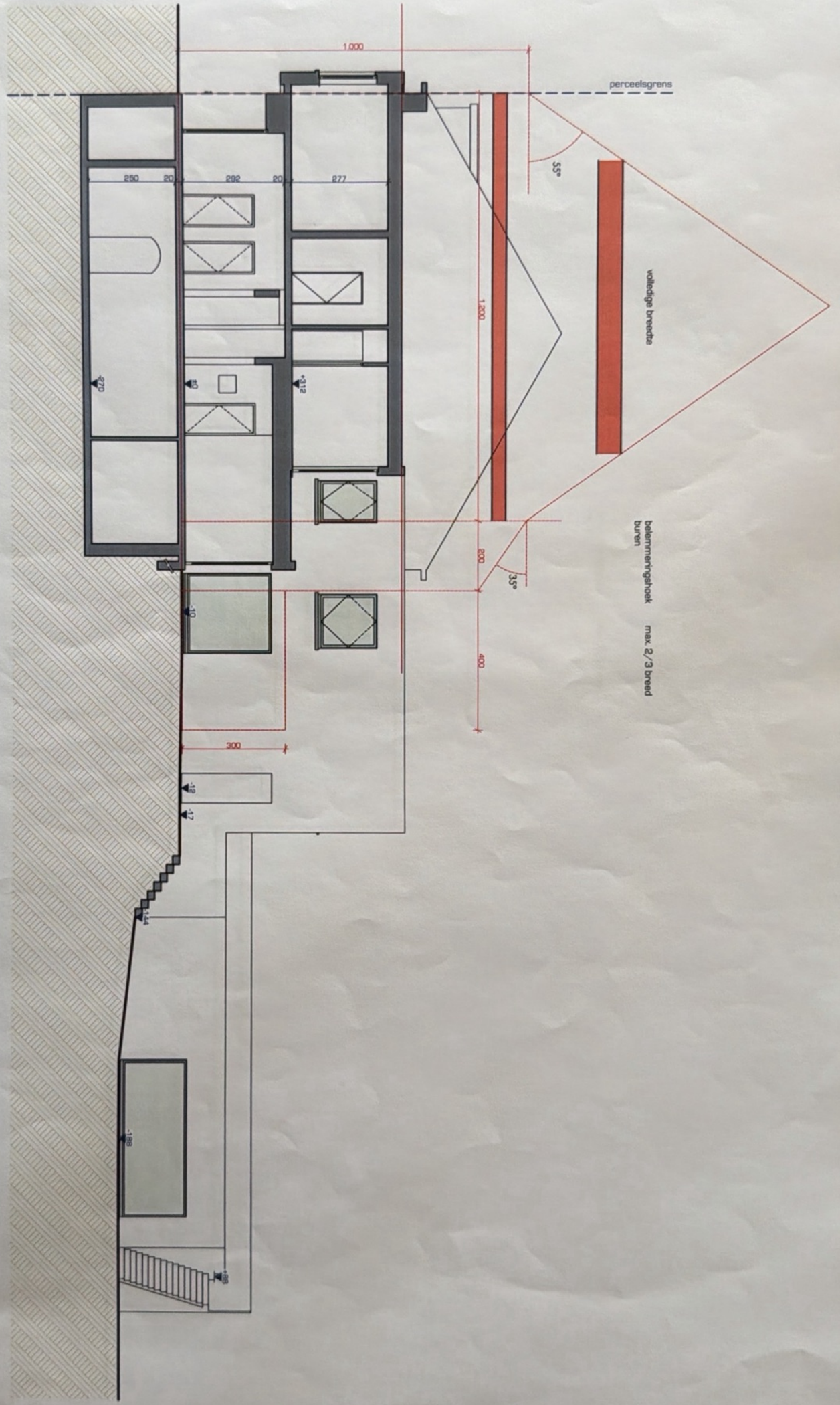


**CROEMAN'S HEYLEN**  
ARCHITECTEN

CAKROEDERSTRAAT 12 3 3900 SINT PIETRSBOM TEL: 0474 821114 FAX: 0474 821115  
 info@croemansheylen.nl www.croemansheylen.nl

13/09/17  
17XX FSTRATS

**SNEDE AA**  
1:100



**CROSEMAN/ HEYLEN**

CAÏCHENDEKONINKRIJK U. B. 8. 3600 HERTFORDEN. TEL. 0032 3 611 11 11. FAX 0032 3 611 11 12. WWW.CROSEMAN-HEYLEN.BE

